

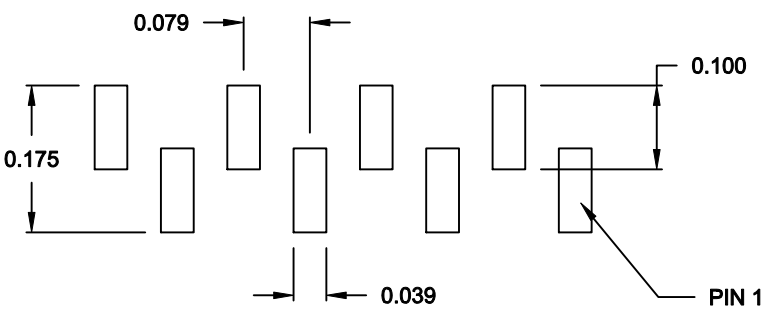
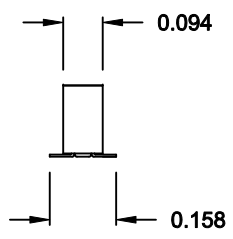
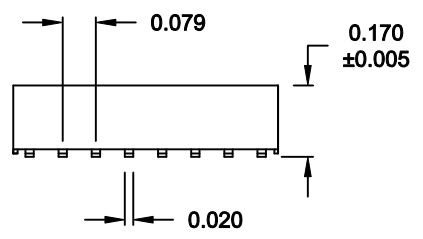
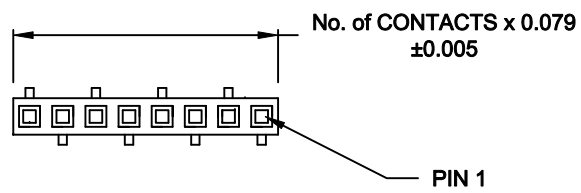
DESCRIPTION: 2MM RECEPTACLES

**MATERIAL:**

HOUSING: NYLON 6T, UL 94V-0, BLACK  
 CONTACT: PHOSPHOR BRONZE  
 PLATING: GOLD FLASH ENTIRE CONTACT

**ELECTRICAL:**

CURRENT RATING: 1 AMPS  
 CONTACT RESISTANCE: 20mOHMS Max.  
 INSULATOR RESISTANCE: 5,000MOHMS Min.  
 DIELECTRIC WITHSTANDING: 500VAC  
 OPERATING TEMPERATURE: -40° TO +105° C  
 PROCESS TEMPERATURE: 260° C FOR 10 SECONDS



**PCB LAYOUT**

SCALE = 4 : 1

**2863 YY 06 R P2**

SERIES \_\_\_\_\_  
 2863 = SINGLE ROW  
 POSITIONS \_\_\_\_\_  
 SINGLE - INCREMENTS OF 1  
 (3 TO 40)  
 TYPE \_\_\_\_\_  
 06 = SURFACE MOUNT  
 RoHS COMPLIANT \_\_\_\_\_  
 HIGH TEMP.  
 PLATING \_\_\_\_\_  
 P2 = GOLD FLASH

DO NOT SCALE FROM DRAWING

	THESE DRAWINGS AND SPECIFICATIONS ARE THE PROPERTY OF NorComp AND SHALL NOT BE REPRODUCED, COPIED OR USED AS THE BASIS FOR THE MANUFACTURE OR SALE OF APPARATUS WITHOUT WRITTEN PERMISSION.		DRAWN: PAM JENKINS	DATE: 1-29-06
			CHECKED:	DATE:
<h1>NorComp</h1>		SCALE: 2 : 1	SHEET 1 OF 1	REV 5
		DWG NO. 2863YY06RP2		

RoHS COMPLIANT